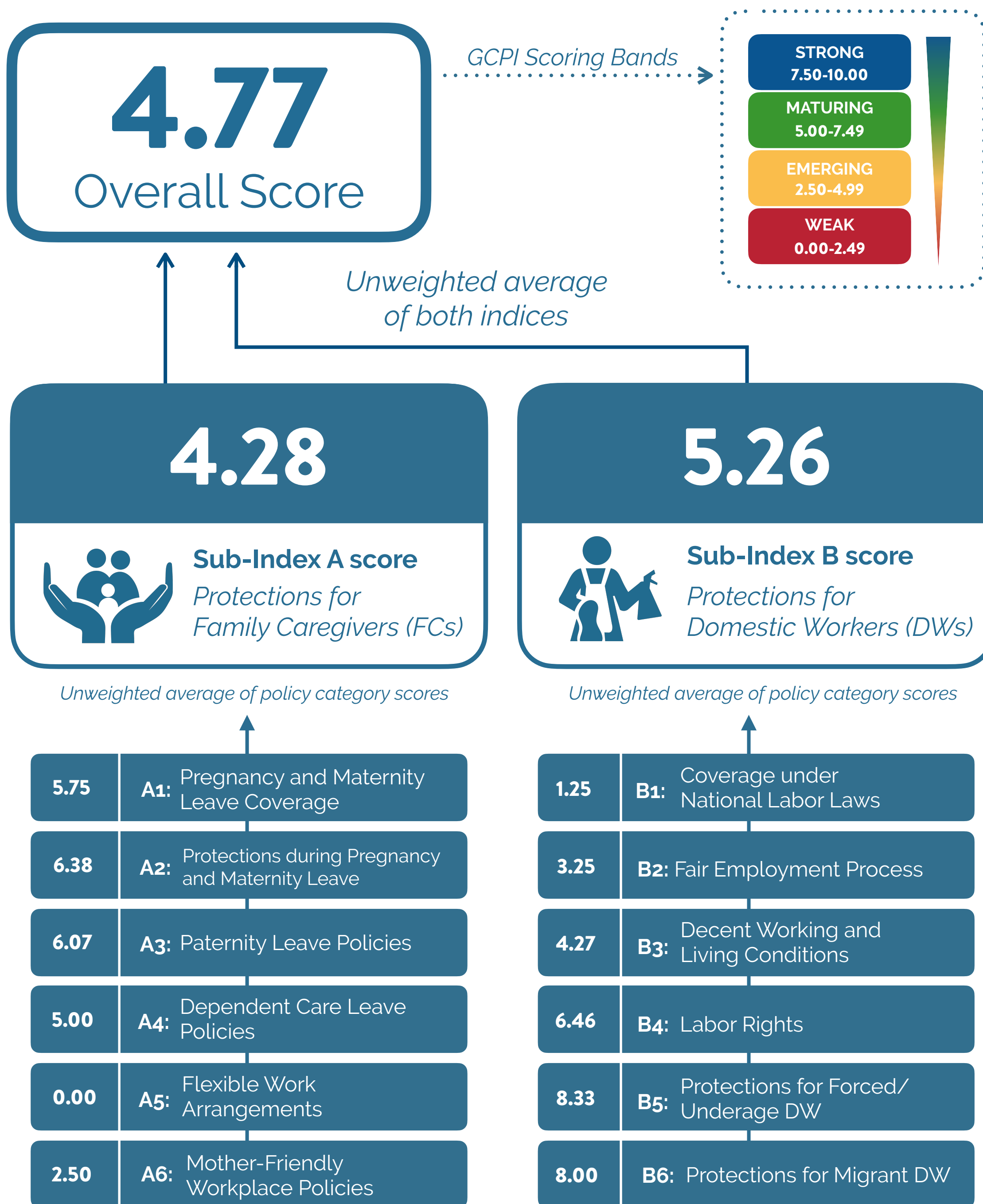


GCPI Methodology Quick Guide

How the scores are calculated



Using a hypothetical country's scores as an example



* Each country is scored on 12 policy categories (A1-A6, B1-B6), which are in turn composed of various sub-categories and questions (Qs).

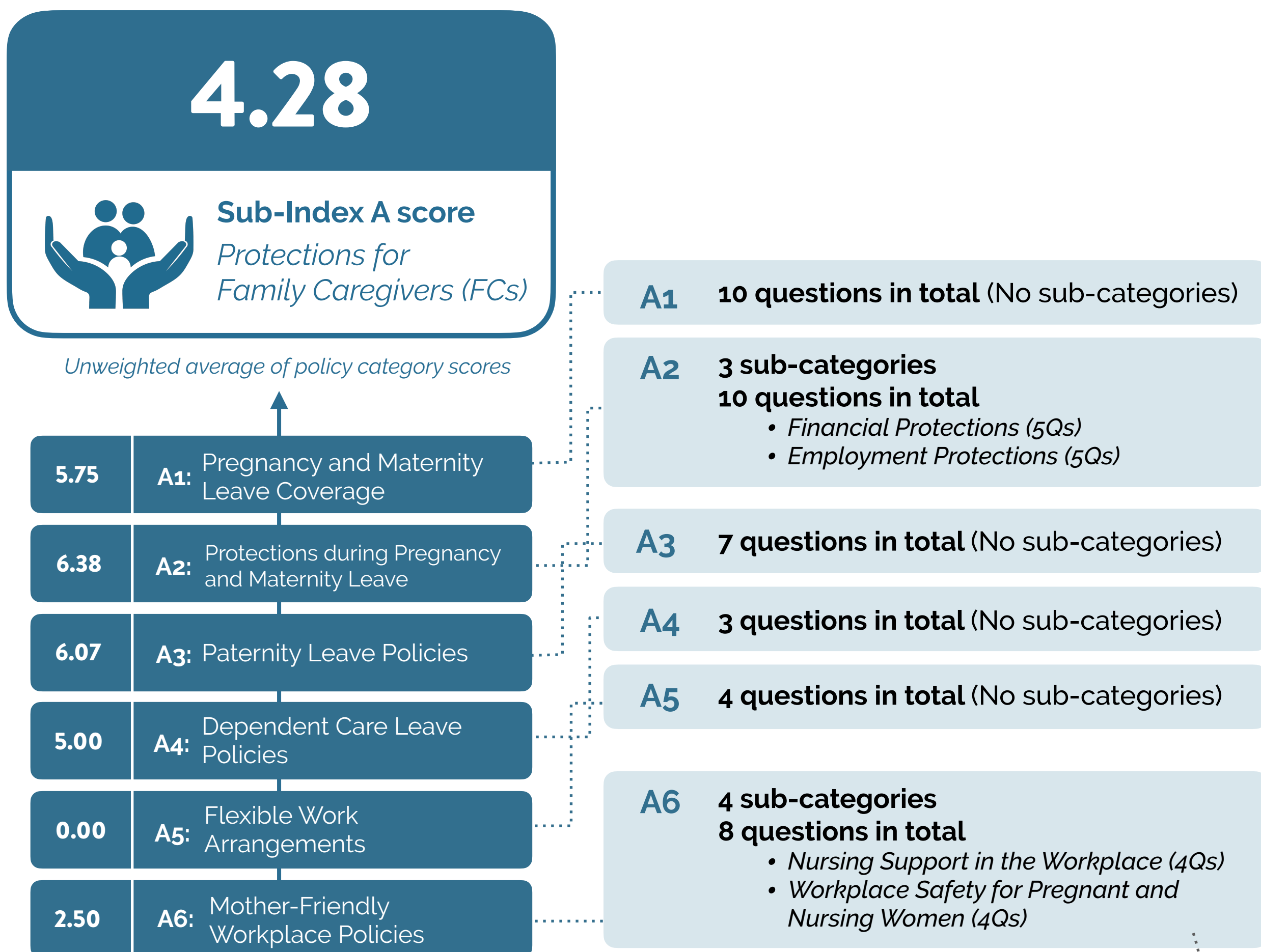
GCPI Methodology Quick Guide

How Sub-Index A is calculated



Using a hypothetical country's scores as an example

* Each country is scored on 12 policy categories (A1-A6, B1-B6), which are in turn composed of various sub-categories and questions (Qs).



Example of a question:

A6.2.1: Are employers required to assess and report workplace risks related to the health and safety of pregnant and nursing women and their children?

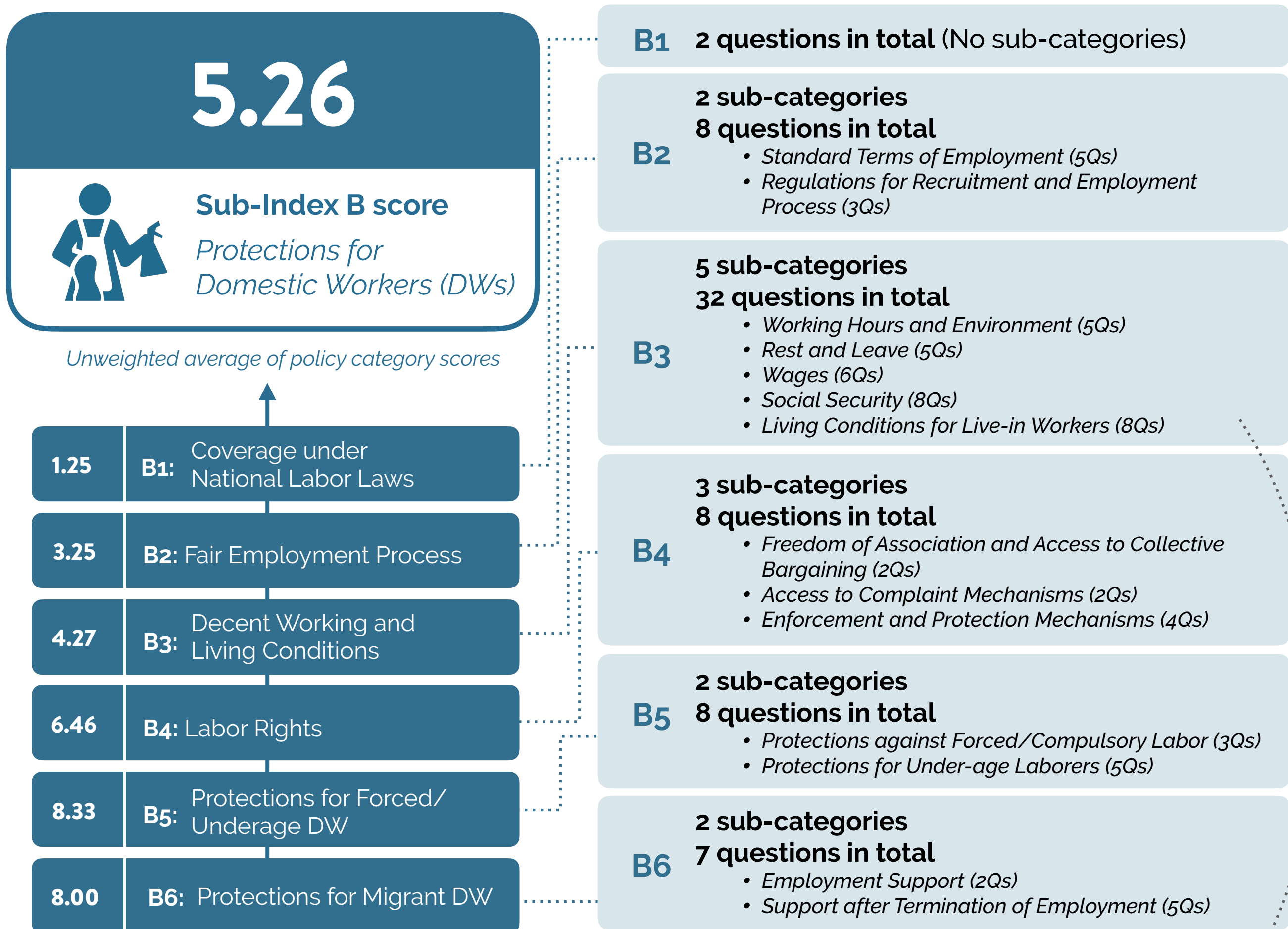
GCPI Methodology Quick Guide

How Sub-Index B is calculated



Using a hypothetical country's scores as an example

* Each country is scored on 12 policy categories (A1-A6, B1-B6), which are in turn composed of various sub-categories and questions (Qs).



Example of a question:
B3.5.8: Are live-in domestic workers legally entitled to keep in their possession their travel and identity documents?